

Start capacitors

BEVI

Start capacitors are a capacitor type designed to increase motor starting torque of single phase motors during start-up.

Since the capacitor is normally automatically (not for continuous operation) disconnected after start-up, a large bulk capacitance can be obtained in a small volume.

Start capacitors are non-polarized electrolytic capacitors.



Start capacitor

Typical applications

A capacitor designed for intermittent alternating current applications at 50-60 Hz for the start-up of single phase motors.

Properties

A high capacitance value (μF) to provide the single phase motor with sufficient starting torque for up-start.

Composition

A non-polarized electrolytic capacitor for AC connection. Plastic material of the self extinguishing type (V2).

Overpressure valve in silicone-rubber.

Standard items are normally delivered with metal mounting clips as well as a protective casing in self extinguishing plastic. Connection via double flat pin 6.3 mm. Delivered without discharge resistors.

Start capacitors

Item number	Capacitance (μF)	Voltage (V)
106081	25–31,5	320
106082	31.5–40	320
106083	40–50	320
106084	50–63	320
106085	63–80	320
106086	80–100	320
106087	100–125	320
105960	125–160	320
106088	160–200	320
105962	200–250	320
106089	250–315	320
122256	315–400	250

Norms

Manufactured in compliance with EN60252-2.

Packaging

Sold individually from our picking stock. The number of capacitors per box = 50 units.

We also offer separate discharge resistors 470 kOhm/2W

Discharge resistor

Item number	Resistance (kOhm)	Power (W)
125998	470	2

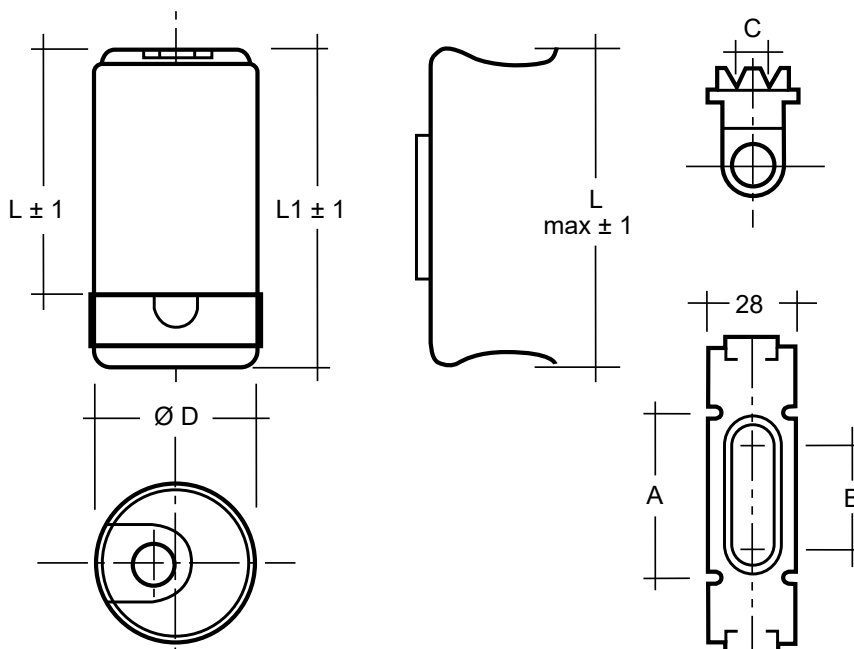
Tekniska data

Start capacitors comply with reference standard VDE 560-8, EN 60252.

Properties		
Mechanical properties	Value	Unit
Dimensions capacitor - inklusive plastlock ($\varnothing \times L1$)	46 × 98	mm
Dimensions external mounting plate (L × W)	104 × 28	mm
Dimensions fixing mounting plate A/C/D	56/6/37	mm
Anslutning dubbla flatstift bredd	6,3	mm
Thermal properties		
Operating temperature	-25 / +75	°C
Storage temperature	-40 / +85	°C
Electrical properties		
Working voltage (N=320V)	320	V
Working voltage (N=250V)	250	V
Capacitance tolerance	*	µF
Frequency working voltage	50-60	Hz
Test voltage between terminals × 1 sec	1,4 × N	V
Test voltage between terminals to case	1,5	kV
Dissipation factor (at 100 Hz, 20°C)	≤0,1	tan delta
Connection ratio (according to EN 60252)**	1,67	%
Long-term stability test connecting **	500	h

* Tolerance in the capacitance value is specified in the designation for each item.

** Standard connecting time (according to EN 60252) 3 sec and disconnecting time 177 sec.



How to contact BEVI

Contact details for all countries are continually updated on our website. Please visit www.bevi.com to access the information direct.

BEVI AB (Headquarters)
Blomstermåla, Sweden
Tel. +46 499 271 00
info@bevi.se

BEVI