

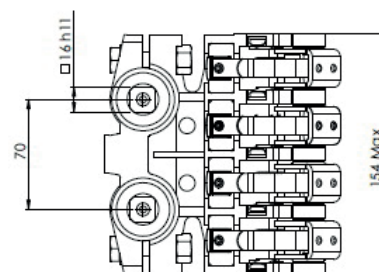
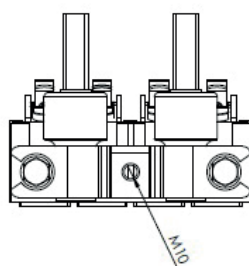
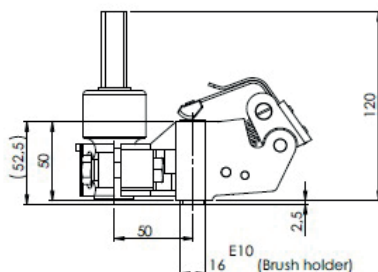
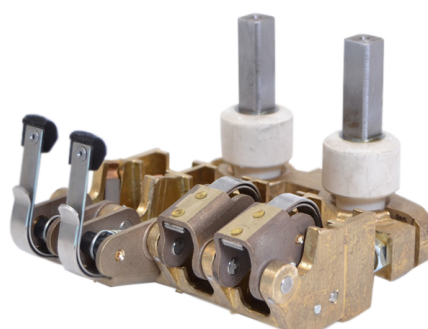
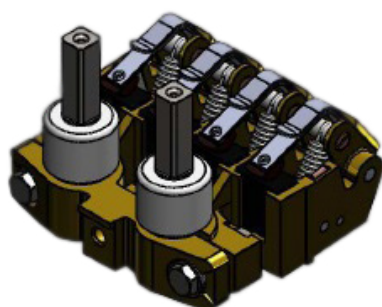
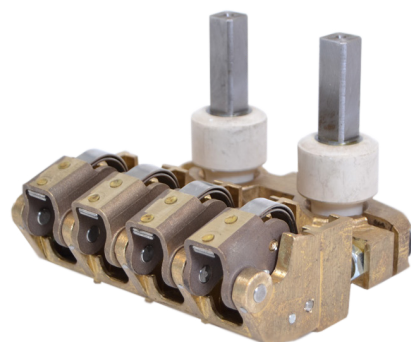
# Traction 4 pocket, pocket brush holder



Complete brush holder for traction motors with four brush holder pockets with dimensions 16 x 32 x max 54 mm.

Insulators for direct mounting of the complete unit are Included. Very stable assembly made of homogeneous cast brass. Standard connection for cable shoe and cushion on holder arm for alignment with top of brushes.

Insulated bolts can be ordered as reserve parts.



Insulated bolts suitable for 126065 sold individually.



## Article list

| Item number | Product type                 | Brush dim x 4 (mm) |    |        |
|-------------|------------------------------|--------------------|----|--------|
|             |                              | t                  | a  | r      |
| 126065      | Brush holder compl. 3956845N | 16                 | 32 | Max 54 |
| 126063      | Insulated bolt for 3956845H  |                    |    |        |

## How to contact BEVI

Contact details for all countries are continually updated on our website.  
Please visit [www.bevi.com](http://www.bevi.com) to access the information direct.

BEVI AB (Headquarters)  
Blomstermåla, Sweden  
Tel. +46 499 271 00  
[info@bevi.se](mailto:info@bevi.se)